

# Au OBD2 CAN Simulator Firmware Update Procedure

**(SN-23017 only)**

**Note: The firmware is dedicated design for AU OBD2 CAN Simulator SN-23017 only.**

**Any attempt to use this file to any other devices will result in non-function units.**

May 21, 2026

Au Group Electronics

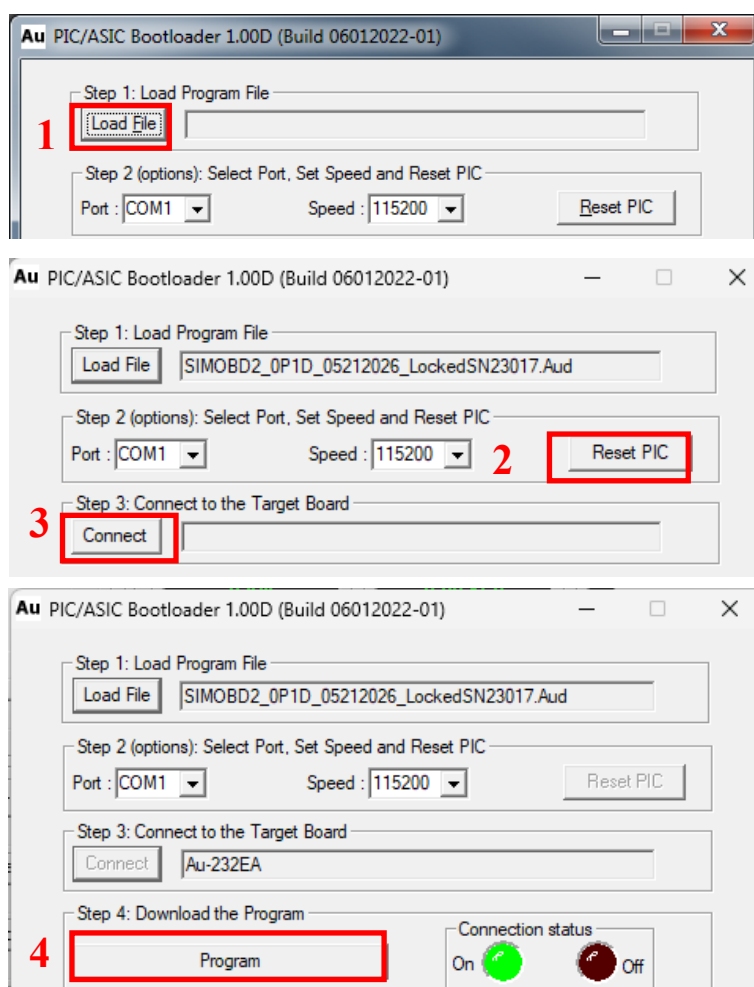
Find download a ZIP file "SIMOBD2 CAN\_1.00A\_LockSN\_23017.ZIP" from the given link, unzip it, the following 4 files are included:

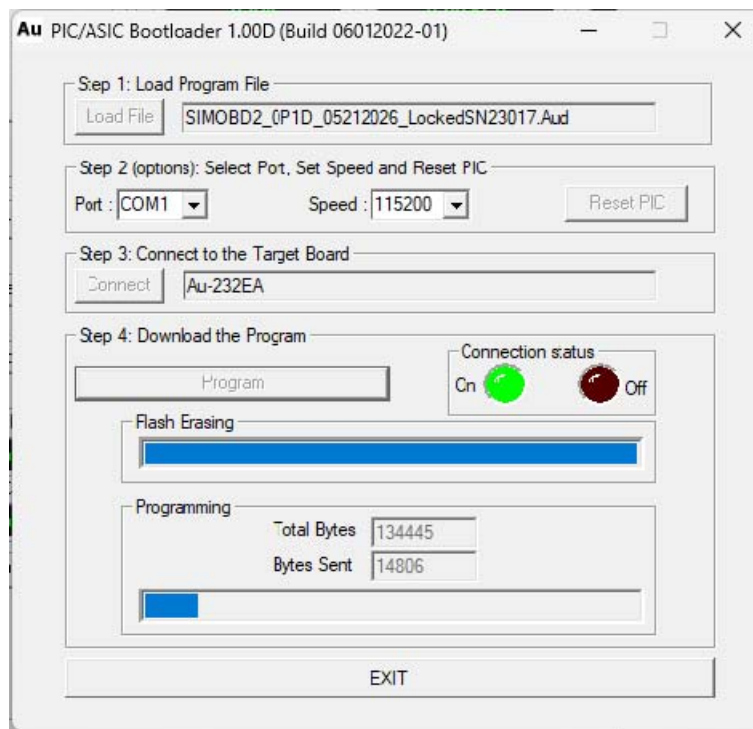
1. Au OBD2 CAN Simulator Upgrade Procedure for SN-23017.pdf
2. Setup Au PIC Bootloader V1.00C.exe
3. SIMOBD2\_0P1D\_05212026\_LockedSN23017.Aud
4. setup OBD2 CAN Simulator Remote Terminal V1.00A Build 03122026-01.exe

## ***Firmware Upgrading Procedure:***

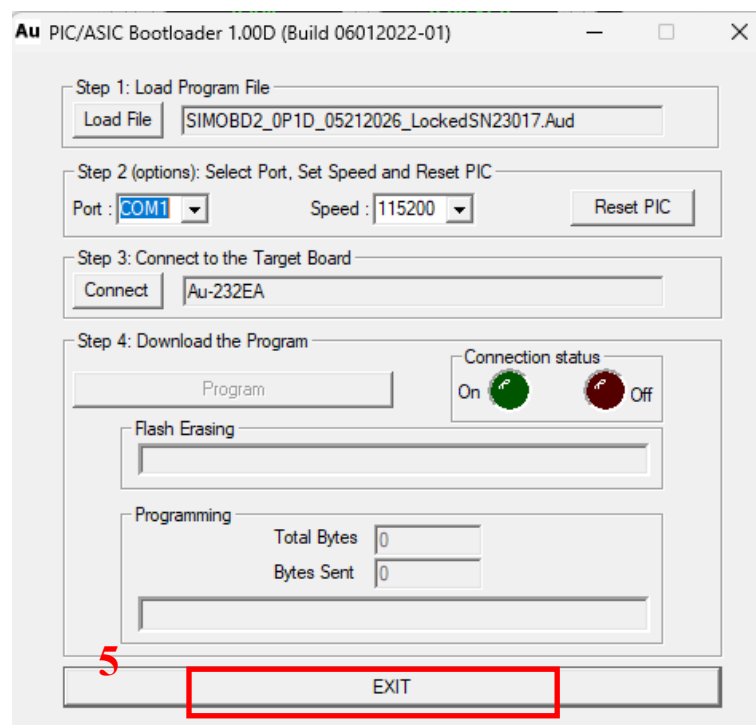
**Before upgrade, please uninstall the previous Au OBD2 CAN Simulator remote terminal GUI on your PC!!!!**

1. Power up the Au OBD2 CAN Simulator SN-23017 and connect it to PC.
2. Double click "Setup Au PIC Bootloader V1.00C.exe" file to install Au PIC Bootloader. Note: Detail procedure on how to install Au PIC Bootloader can be found from AU OBD2 CAN Simulator user manual Appendix C.
3. Open Au PIC Bootloader PC software, and load "SIMOBD2\_0P1B\_07262023-01\_SN\_Locked23017.Aud" file to upgrade Au OBD2 CAN Simulator firmware.



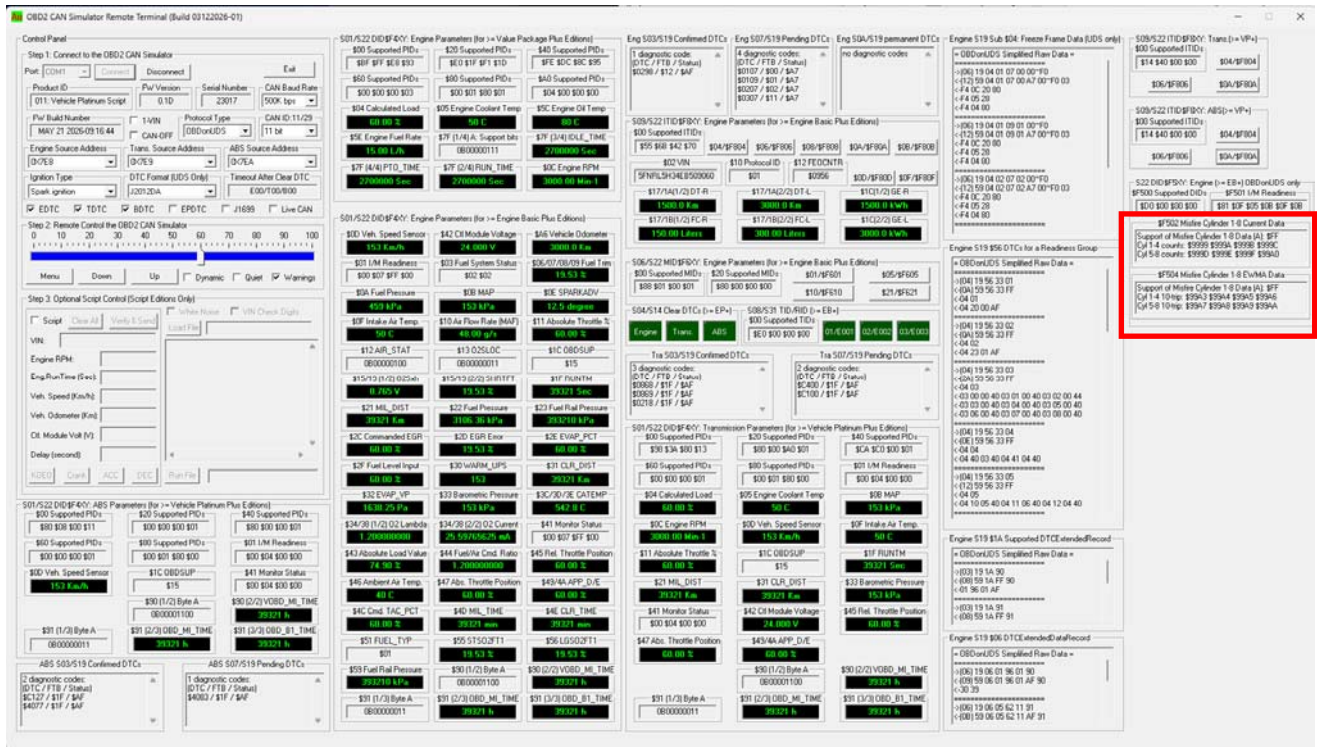


4. A long beep will be heard indicating new firmware boot loading process has successfully accomplished, click Exit



# Remote Terminal GUI for Au OBD2 CAN Simulator

Double click file " setup OBD2 CAN Simulator Remote Terminal V1.00A Build 03122026-01.exe" and follow the steps to install Au OBD2 CAN Simulator Remote Terminal GUI, the GUI is shown in the following image, noticed that OBDOnUDS DID service \$22 \$F500, \$F501, \$F502, \$F504 are implemented for FW0.1D.



Thanks for choosing Au Group Electronics products.  
Should you have any question, please do not hesitate to let us know.

[www.auelectronics.com](http://www.auelectronics.com)  
[support@aelectronics.com](mailto:support@aelectronics.com)